

**This electronic collection of documents is provided
for the convenience of the user
and is Not a Certified Document –**

**The documents contained herein were originally issued
and sealed by the individuals whose names and license
numbers appear on each page, on the dates appearing
with their signature on that page.**

**This file or an individual page
shall not be considered a certified document.**

09/08/2019

See Sheet 1A For Index of Sheets

STATE OF NORTH CAROLINA
DIVISION OF HIGHWAYS

POLK COUNTY

**LOCATION: TRYON, POLK COUNTY
SALUDA, POLK COUNTY**

**TYPE OF WORK: CURB RAMPS
SEE SITE MAP SHEETS FOR COUNTY SITE LOCATIONS**

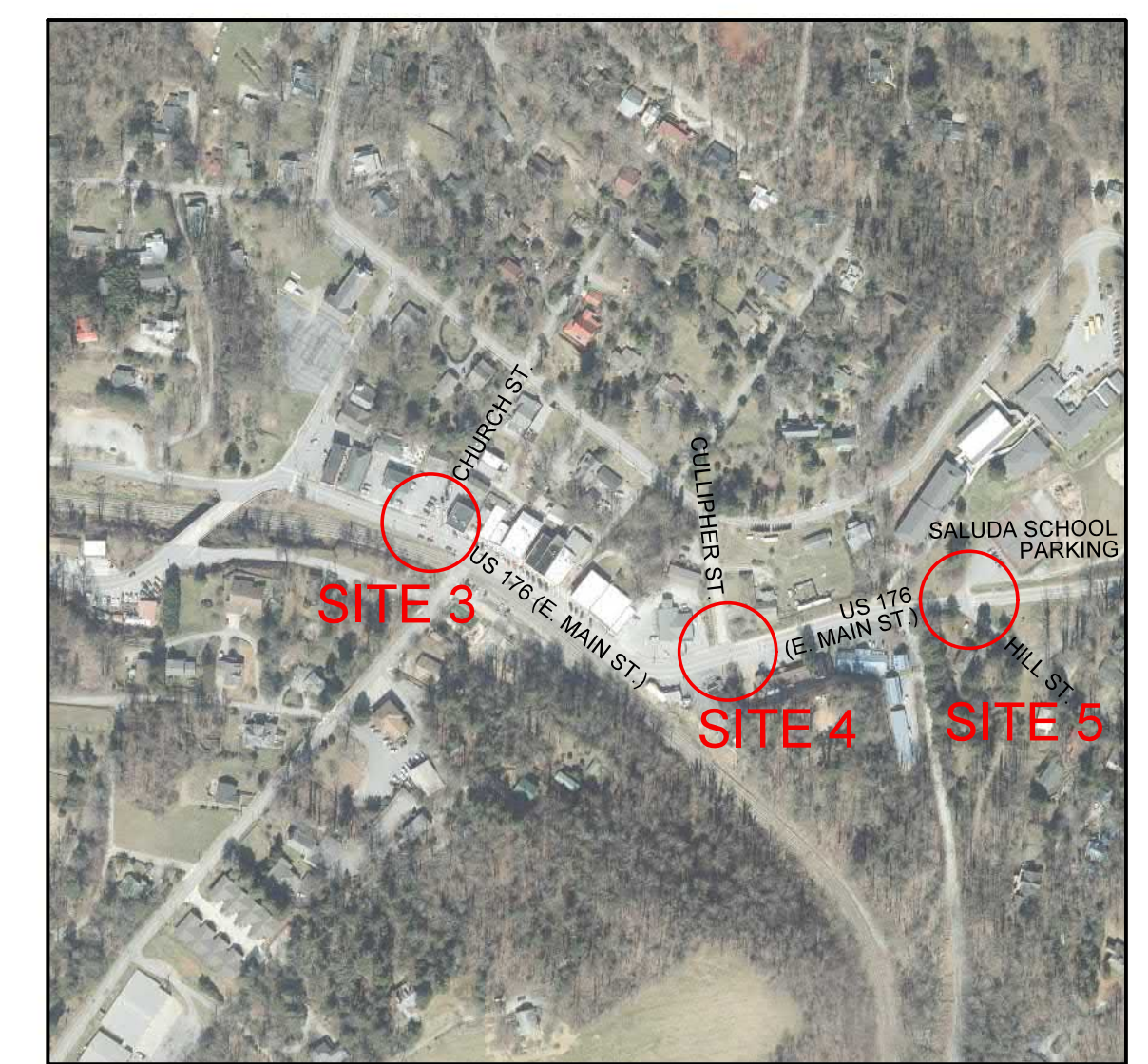
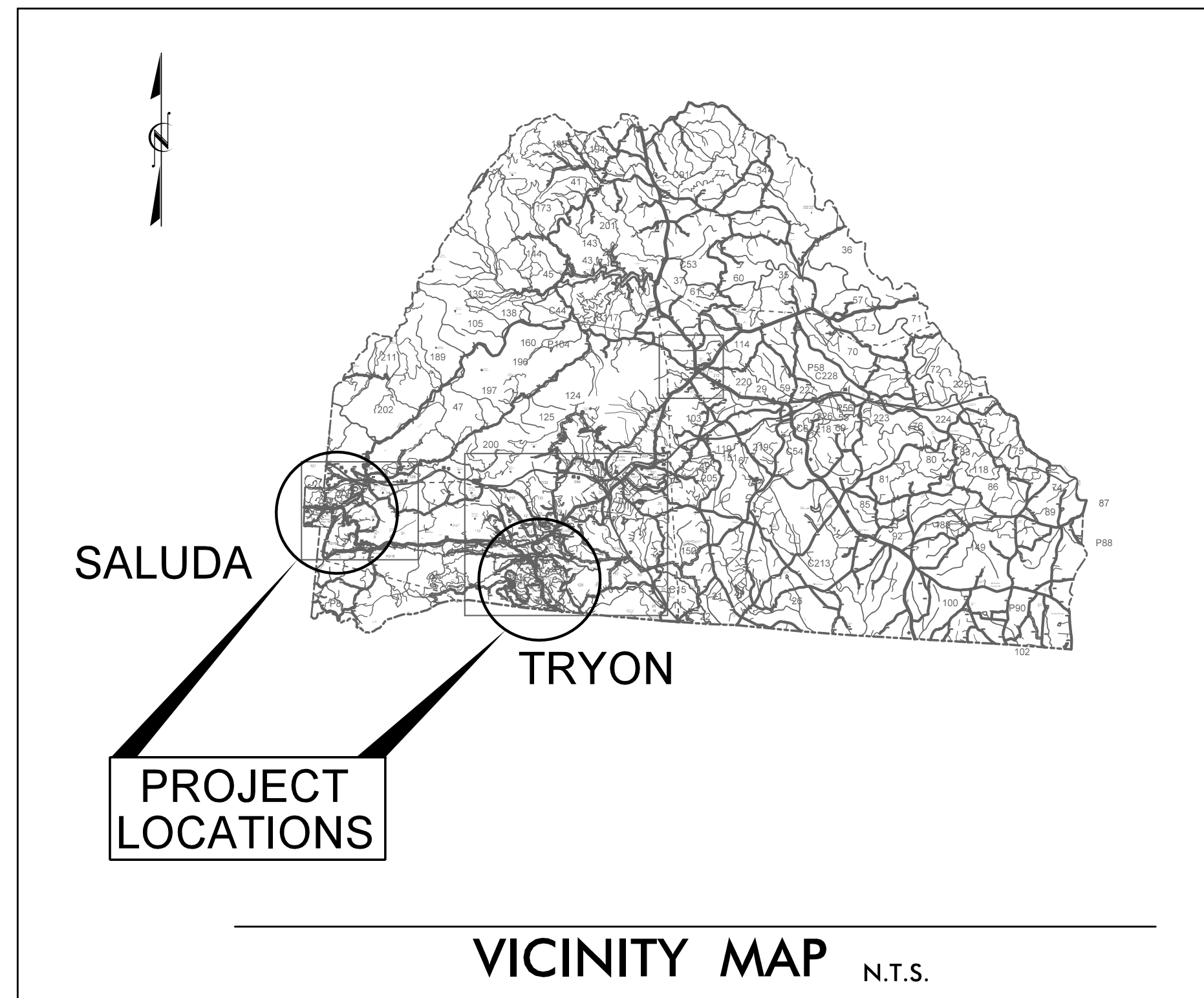
STATE	STATE PROJECT REFERENCE NO.	SHEET NO.	TOTAL SHEETS
N.C.	R-5794E	1	6
STATE PROJ. NO.	F.A. PROJ. NO.	DESCRIPTION	
44910.3.7			

TIP PROJECT: R-5749E

CONTRACT: DN00697

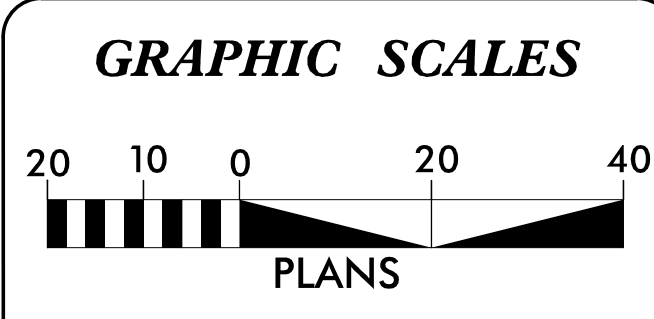
LOCATION: TRYON, POLK COUNTY
SITE 1 - US 176 (MAIN ST.) AND CAROLINA DR.
SITE 2 - US 176 (MAIN ST.) AND T.J.'S CAFE

LOCATION: SALUDA, POLK COUNTY
SITE 3 - US 176 (MAIN ST.) AND CHURCH ST.
SITE 4 - US 176 (MAIN ST.) AND CULLIPHER ST.
SITE 5 - US 176 (MAIN ST.) AND SALUDA SCHOOL PARKING



NAD 83 (CORS)

DOCUMENT NOT CONSIDERED FINAL
UNLESS ALL SIGNATURES COMPLETED



DESIGN DATA

ADT 2015 =	NA
ADT 2017 =	NA
DHV =	NA
D =	NA
T =	NA
V =	VARIES
* TTST =	NA
FUNC CLASS =	LOCAL

PROJECT LENGTH

N/A

Prepared in the Office of: **wsp**

WSP USA Inc.
1001 MOREHEAD SQUARE DRIVE
SUITE 610
CHARLOTTE, NC 28203
NC LIC. NO. F-0165

2018 STANDARD SPECIFICATIONS

RIGHT OF WAY DATE:
N/A

LETTING DATE:
JANUARY 11, 2022

SIERRA HAYNES, PE
PROJECT ENGINEER

PROJECT DESIGN ENGINEER

HYDRAULICS ENGINEER

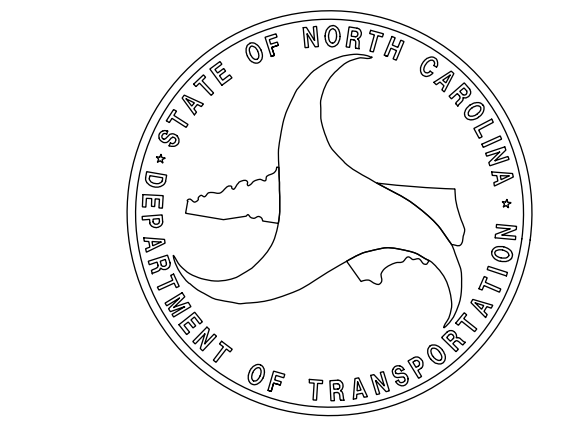
SIGNATURE: _____ P.E.

ROADWAY DESIGN ENGINEER

12/17/2021

DocuSigned by:
Sierra Haynes

SIGNATURE: _____ P.E.




12/17/2021 I:\1883600-03\AR-5794A\Roadway\Proj\2019\2019 R-5794E District\COMBINED_TSH_E.dgn rldw

8/17/99

wsp 1001 MOREHEAD SQUARE DRIVE
SUITE 610
CHARLOTTE, NC 28203
NC LIC. NO. F-0165

PROJECT REFERENCE NO.	SHEET NO.
R-5794E	1A

RW SHEET NO.	
ROADWAY DESIGN ENGINEER	
	
<i>Sierra Haynes</i>	12/17/2021

**DOCUMENT NOT CONSIDERED FINAL
UNLESS ALL SIGNATURES COMPLETED**

INDEX OF SHEETS

SHEET NUMBER

SHEET

1

TITLE SHEET

1A

INDEX OF SHEETS

2C-1 THRU 2C-2

RAMP DETAILS

4 THRU 5

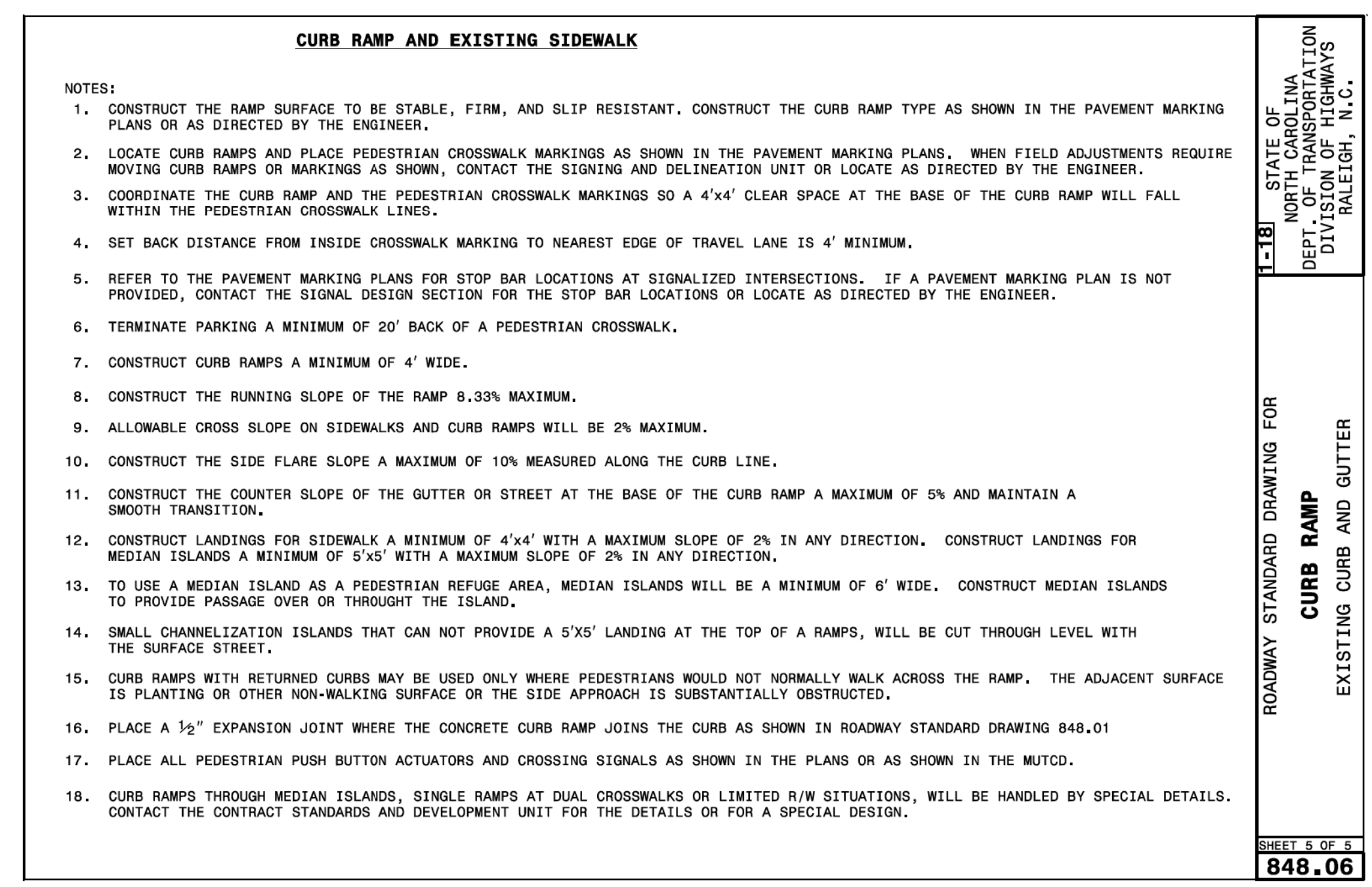
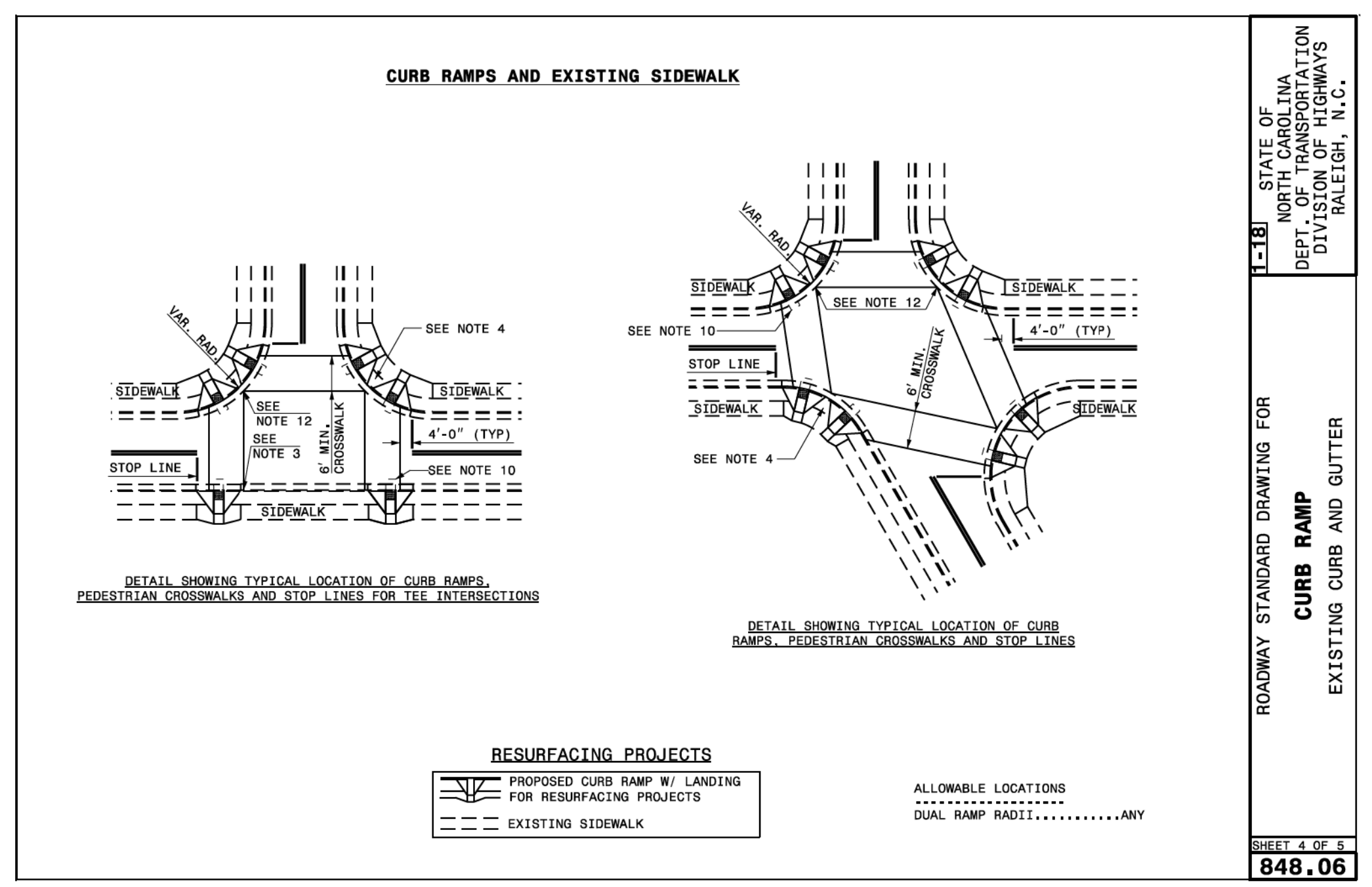
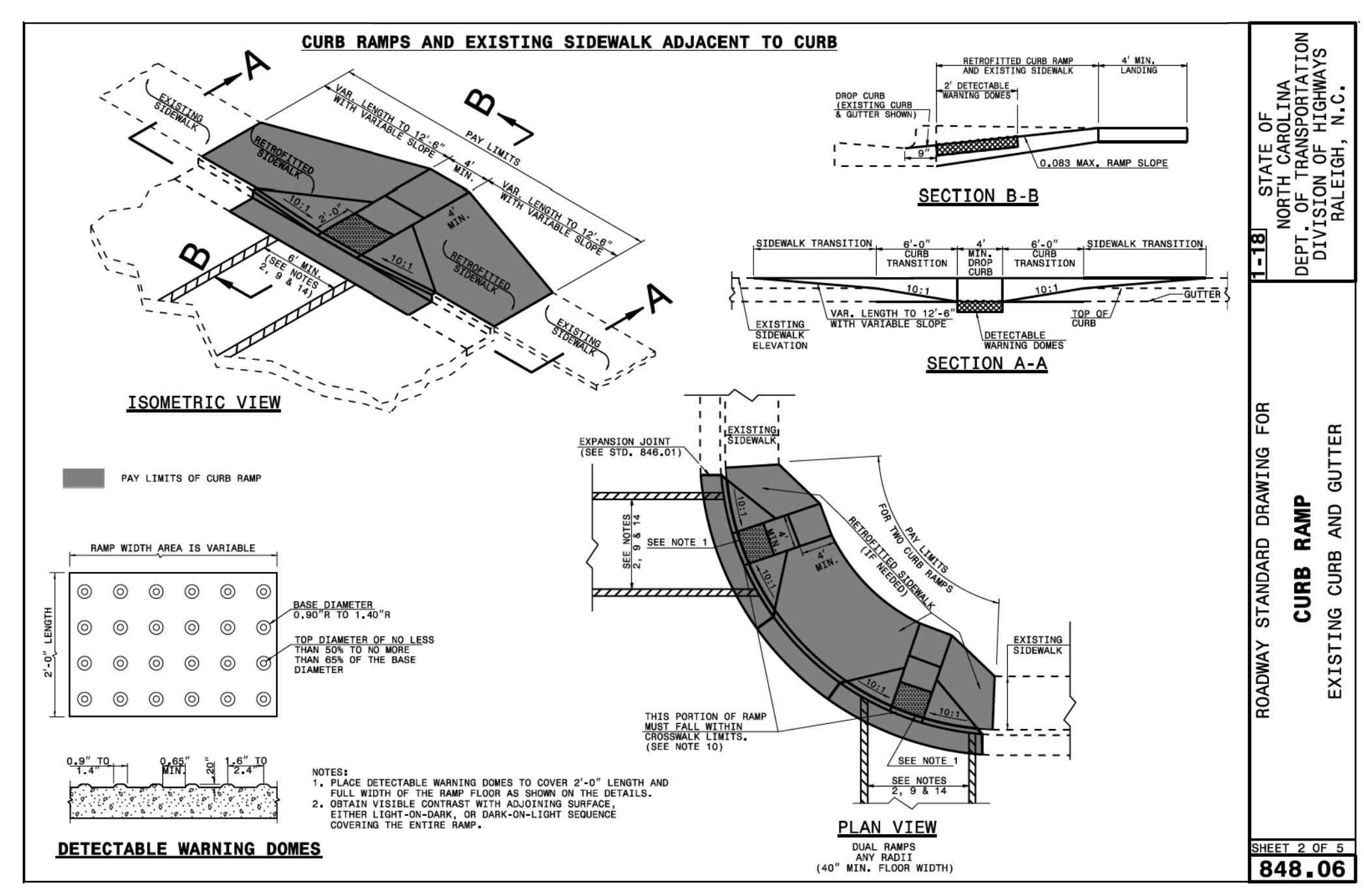
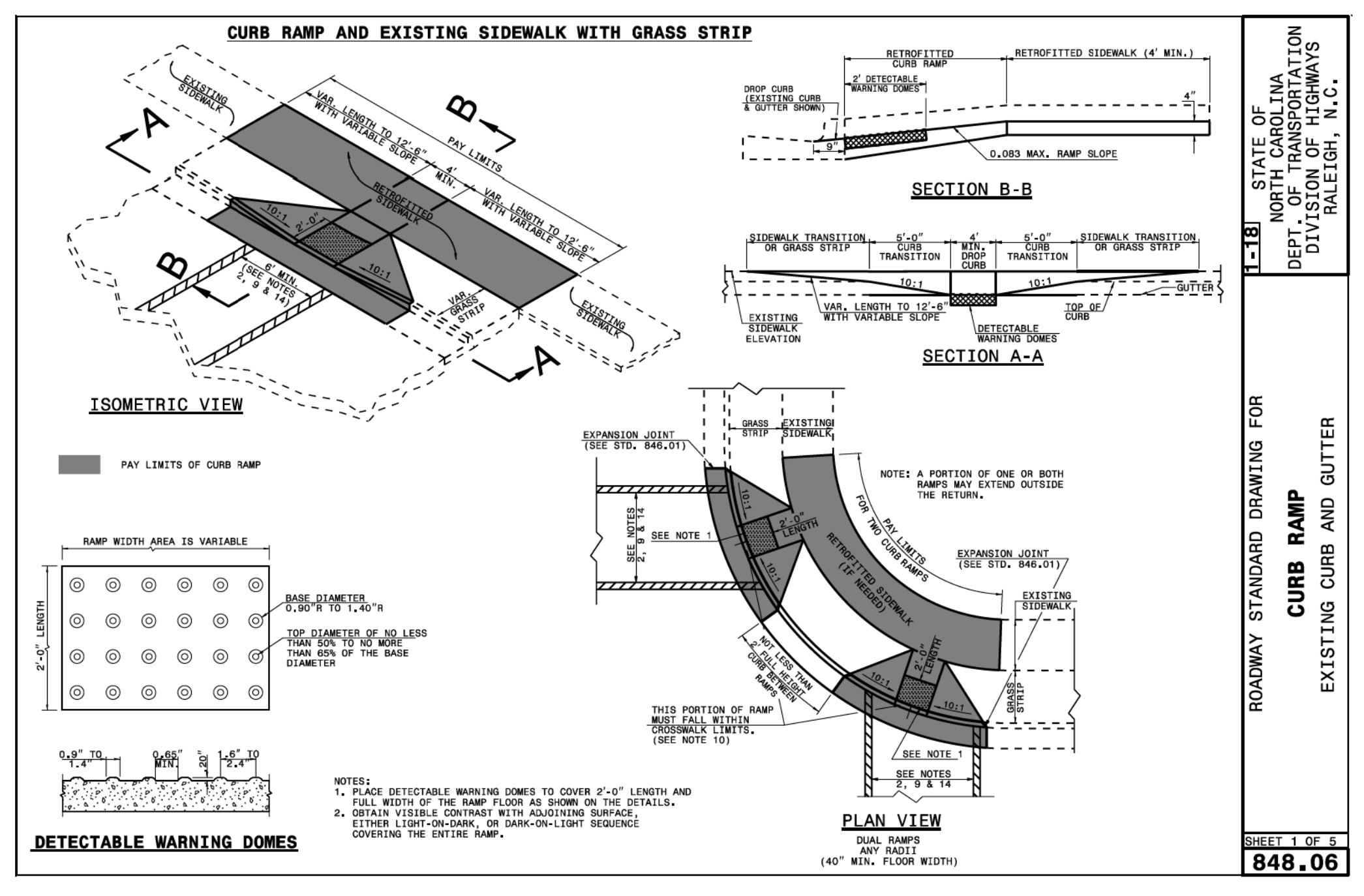
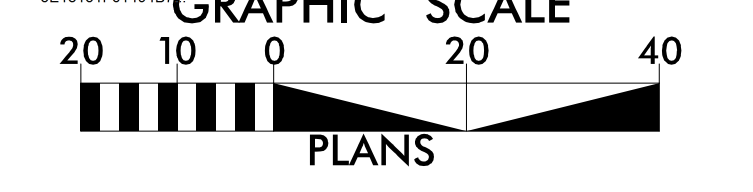
PLAN SHEETS FOR POLK COUNTY

12/16/2021
T:\1883600-03\R-57944\Roadway\Proj\2019\2019 R-5794E District 1\Combined_SHT_1A.dgn
-cidw

**DOCUMENT NOT CONSIDERED FINAL
 UNLESS ALL SIGNATURES COMPLETED**

ROADWAY DESIGN ENGINEER

12/17/2021



8/17/19

wsp 1001 MOREHEAD SQUARE DRIVE
SUITE 610
CHARLOTTE, NC 28203
NC LIC. NO. F-0165

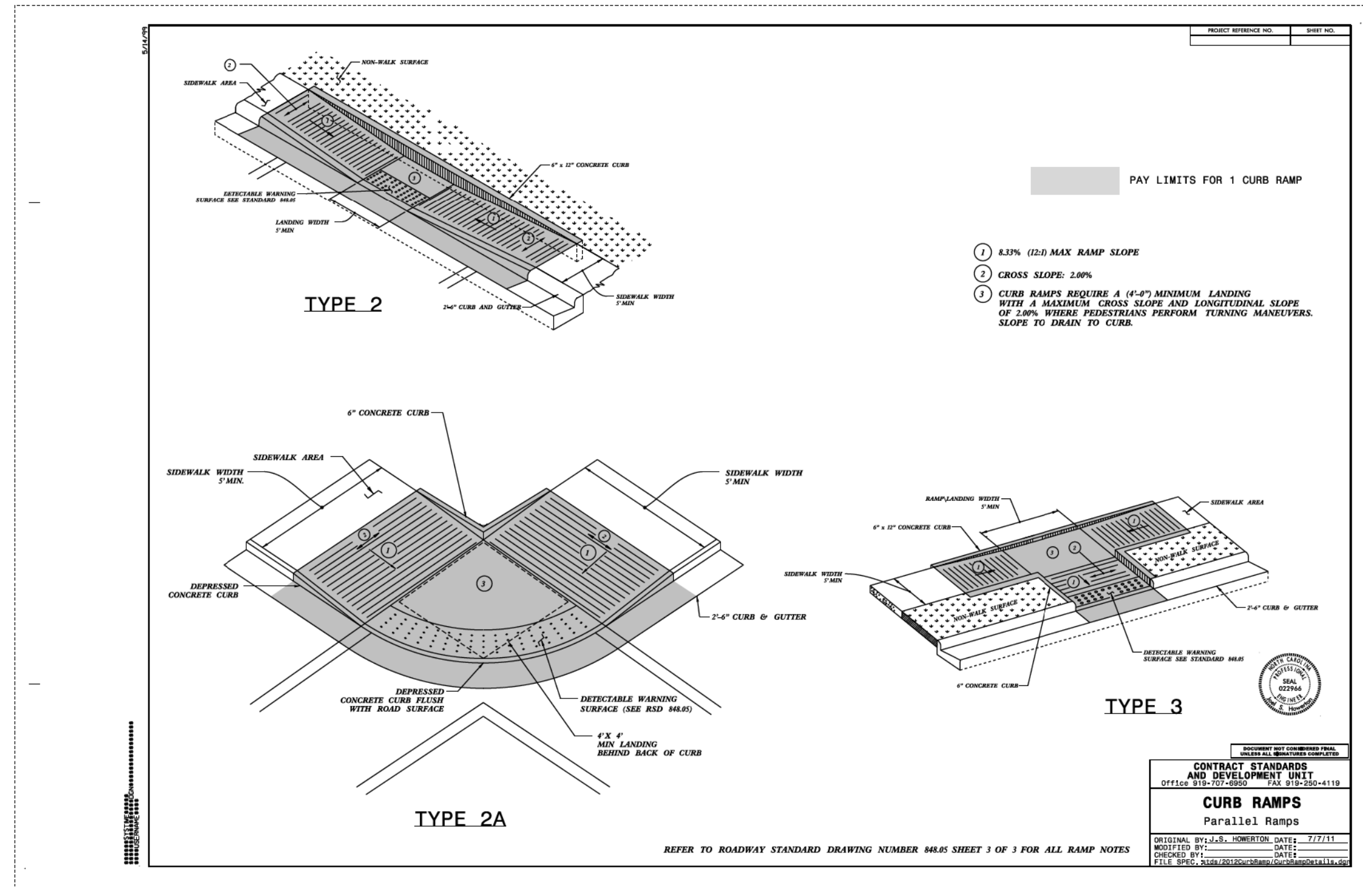
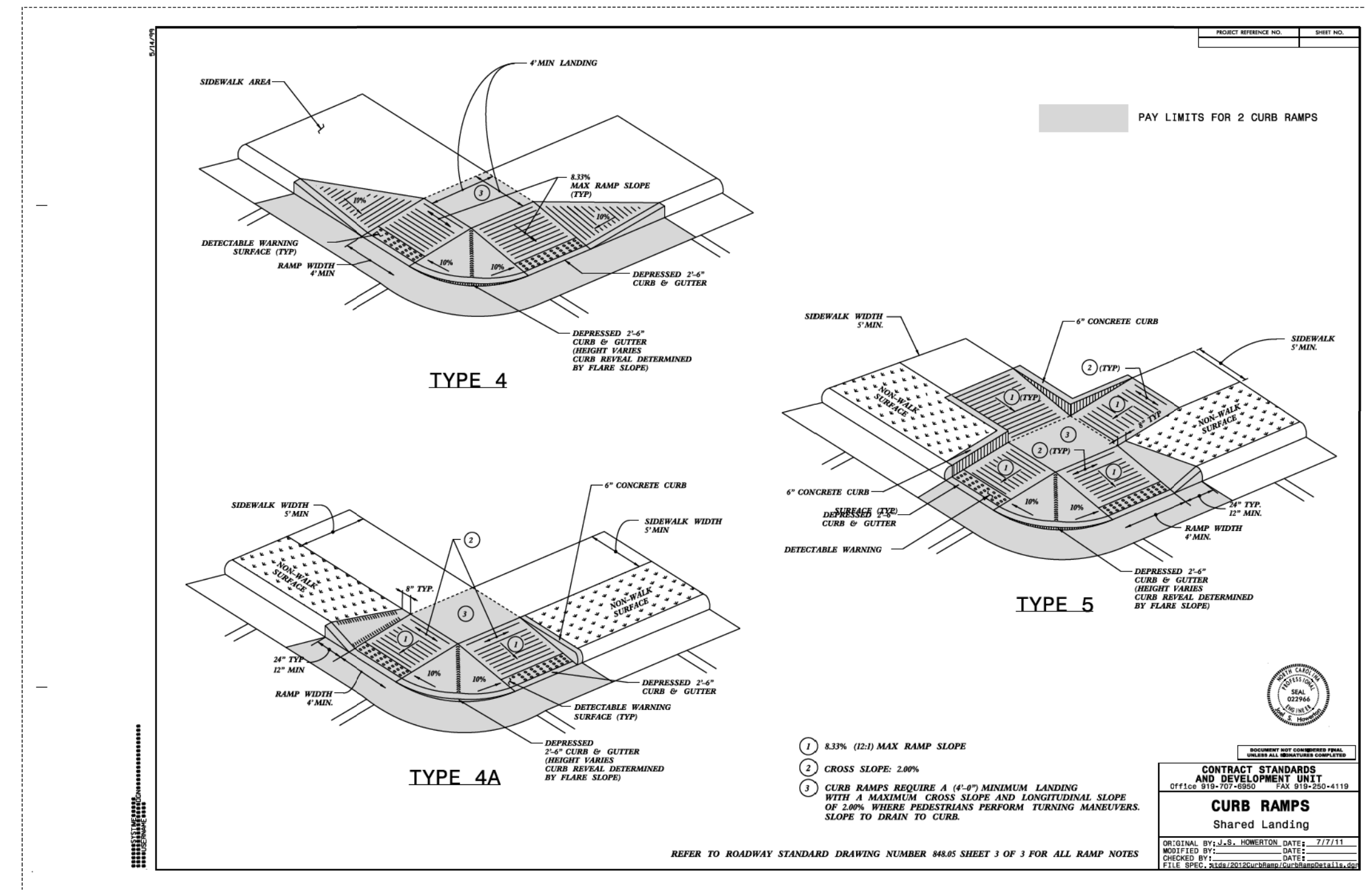
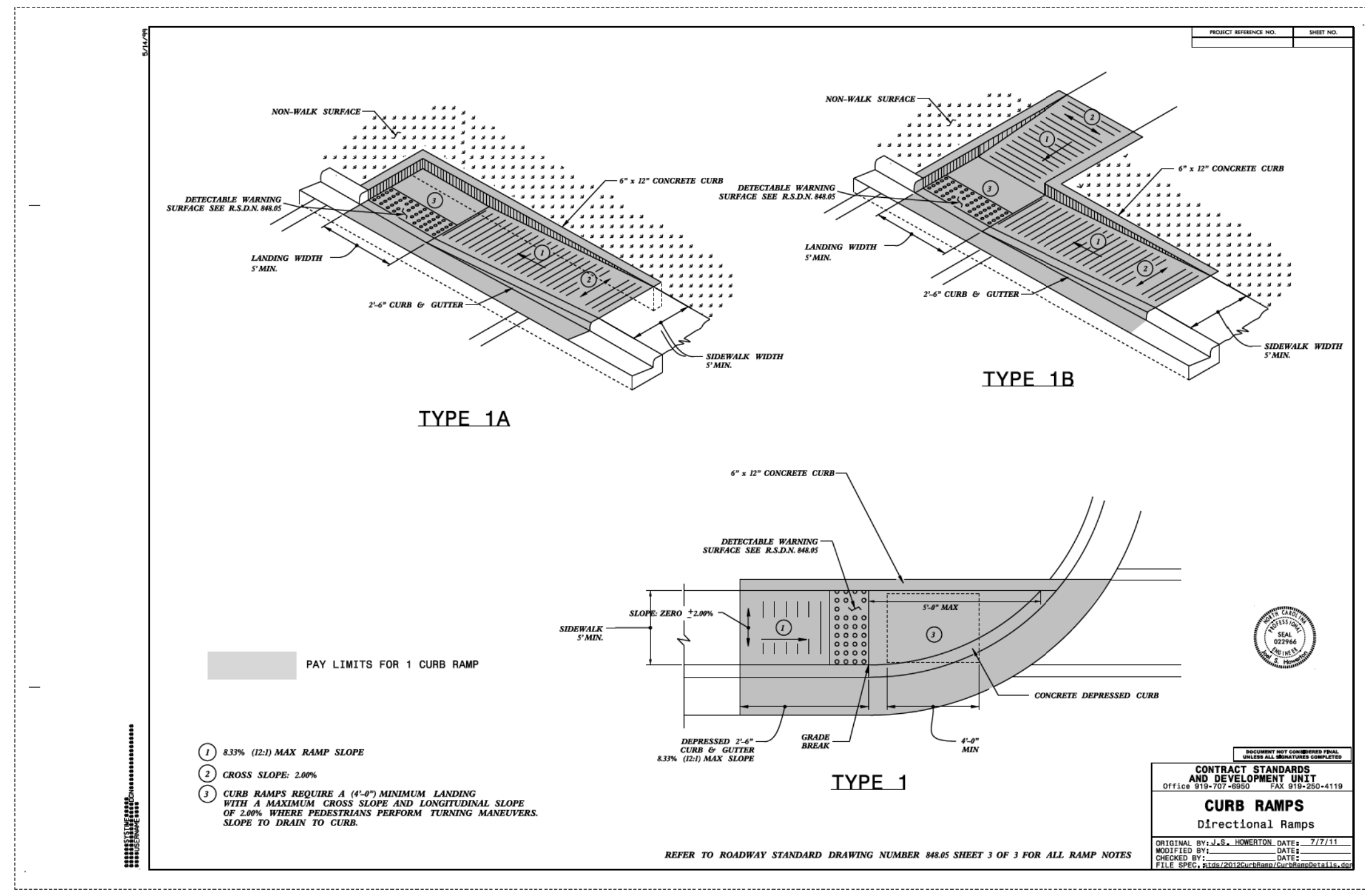
**DOCUMENT NOT CONSIDERED FINAL
UNLESS ALL SIGNATURES COMPLETED**

PROJECT REFERENCE NO. **R-5794E** SHEET NO. **2C-1**

R/W SHEET NO.

ROADWAY DESIGN ENGINEER
Sierra Haynes
NORTH CAROLINA PROFESSIONAL SEAL 039867
ENGINEER
SIERRA HAYNES
12/17/2021

GRAPHIC SCALE
20 10 0 20 40
PLANS



- NOTES:
1. CONSTRUCT THE RAMP SURFACE TO BE STABLE, FIRM, AND SLIP RESISTANT. CONSTRUCT THE CURB RAMP TYPE AS SHOWN IN THE PAVEMENT MARKING PLANS OR AS DIRECTED BY THE ENGINEER.
 2. LOCATE CURB RAMPS AND PLACE PEDESTRIAN CROSSWALK MARKINGS AS SHOWN IN THE PAVEMENT MARKING PLANS. WHEN FIELD ADJUSTMENTS REQUIRE MOVING CURB RAMPS OR MARKINGS AS SHOWN, CONTACT THE SIGNING AND DELINEATION UNIT OR LOCATE AS DIRECTED BY THE ENGINEER.
 3. COORDINATE THE CURB RAMP AND THE PEDESTRIAN CROSSWALK MARKINGS SO A 4'x4' CLEAR SPACE AT THE BASE OF THE CURB RAMP WILL FALL WITHIN THE PEDESTRIAN CROSSWALK LINES.
 4. SET BACK DISTANCE FROM INSIDE CROSSWALK MARKING TO NEAREST EDGE OF TRAVEL LANE IS 4' MINIMUM.
 5. REFER TO THE PAVEMENT MARKING PLANS FOR STOP BAR LOCATIONS AT SIGNALIZED INTERSECTIONS. IF A PAVEMENT MARKING PLAN IS NOT PROVIDED, CONTACT THE SIGNAL DESIGN SECTION FOR THE STOP BAR LOCATIONS OR LOCATE AS DIRECTED BY THE ENGINEER.
 6. TERMINATE PARKING A MINIMUM OF 20' BACK OF A PEDESTRIAN CROSSWALK.
 7. CONSTRUCT CURB RAMPS A MINIMUM OF 4' WIDE.
 8. CONSTRUCT THE RUNNING SLOPE OF THE RAMP 8.33% MAXIMUM.
 9. ALLOWABLE CROSS SLOPE ON SIDEWALKS AND CURB RAMPS WILL BE 2% MAXIMUM.
 10. CONSTRUCT THE SIDE FLARE SLOPE A MAXIMUM OF 10% MEASURED ALONG THE CURB LINE.
 11. CONSTRUCT THE COUNTER SLOPE OF THE GUTTER OR STREET AT THE BASE OF THE CURB RAMP A MAXIMUM OF 5% AND MAINTAIN A SMOOTH TRANSITION.
 12. CONSTRUCT LANDINGS FOR SIDEWALK A MINIMUM OF 4'x4' WITH A MAXIMUM SLOPE OF 2% IN ANY DIRECTION. CONSTRUCT LANDINGS FOR MEDIAN ISLANDS A MINIMUM OF 5'x5' WITH A MAXIMUM SLOPE OF 2% IN ANY DIRECTION.
 13. TO USE A MEDIAN ISLAND AS A PEDESTRIAN REFUGE AREA, MEDIAN ISLANDS WILL BE A MINIMUM OF 6' WIDE. CONSTRUCT MEDIAN ISLANDS TO PROVIDE PASSAGE OVER OR THROUGH THE ISLAND.
 14. SMALL CHANNELIZATION ISLANDS THAT CAN NOT PROVIDE A 5'x5' LANDING AT THE TOP OF A RAMPS, WILL BE CUT THROUGH LEVEL WITH THE SURFACE STREET.
 15. CURB RAMPS WITH RETURNED CURBS MAY BE USED ONLY WHERE PEDESTRIANS WOULD NOT NORMALLY WALK ACROSS THE RAMP. THE ADJACENT SURFACE IS PLANTING OR OTHER NON-WALKING SURFACE OR THE SIDE APPROACH IS SUBSTANTIALLY OBSTRUCTED.
 16. PLACE A 1/2" EXPANSION JOINT WHERE THE CONCRETE CURB RAMP JOINS THE CURB AS SHOWN IN ROADWAY STANDARD DRAWING 848.01
 17. PLACE ALL PEDESTRIAN PUSH BUTTON ACTUATORS AND CROSSING SIGNALS AS SHOWN IN THE PLANS OR AS SHOWN IN THE MUTCD.
 18. CURB RAMPS THROUGH MEDIAN ISLANDS, SINGLE RAMPS AT DUAL CROSSWALKS OR LIMITED R/W SITUATIONS, WILL BE HANDLED BY SPECIAL DETAILS. CONTACT THE CONTRACT STANDARDS AND DEVELOPMENT UNIT FOR THE DETAILS OR FOR A SPECIAL DESIGN.

STATE OF NORTH CAROLINA
DEPT. OF TRANSPORTATION
DIVISION OF HIGHWAYS
RALEIGH, N.C.

ROADWAY STANDARD DRAWING FOR
CURB RAMPS
NOTES

SHEET 3 OF 3
848.05

12/16/2021
T:\11883500-03\11883500-03\Roadway\Proj\2019\2019 R-5794E District 1\11883500-03-SectionC-SHT-2C1-2C2.dgn
-cid

8/17/19

PLAN SHEETS FOR POLK COUNTY

wsp 1001 MOREHEAD SQUARE DRIVE
SUITE 610
CHARLOTTE, NC 28203
NC LIC. NO. F-0165

**DOCUMENT NOT CONSIDERED FINAL
UNLESS ALL SIGNATURES COMPLETED**

PROJECT REFERENCE NO. R-5794E SHEET NO. 4

R/W SHEET NO. ROADWAY DESIGN ENGINEER

SEAL
NORTH CAROLINA PROFESSIONAL ENGINEER
SIERRA HAYNES
SEAL 039867
17/17/2021

GRAPHIC SCALE
20 10 0 20 40
PLANS

SITE 1 - US 176 (MAIN ST.) AND CAROLINA DR.



SITE 2 - US 176 (MAIN ST.) AND T.J.'S CAFE



SEE SHEETS 2C-1 & 2C-2 FOR CURB RAMP DETAILS

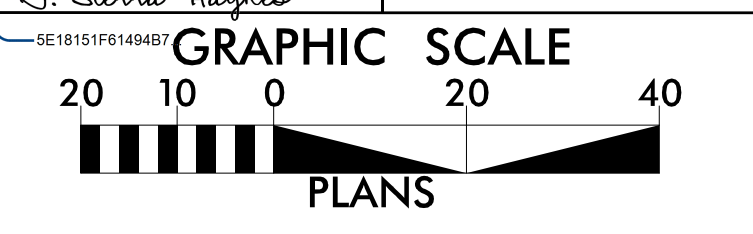
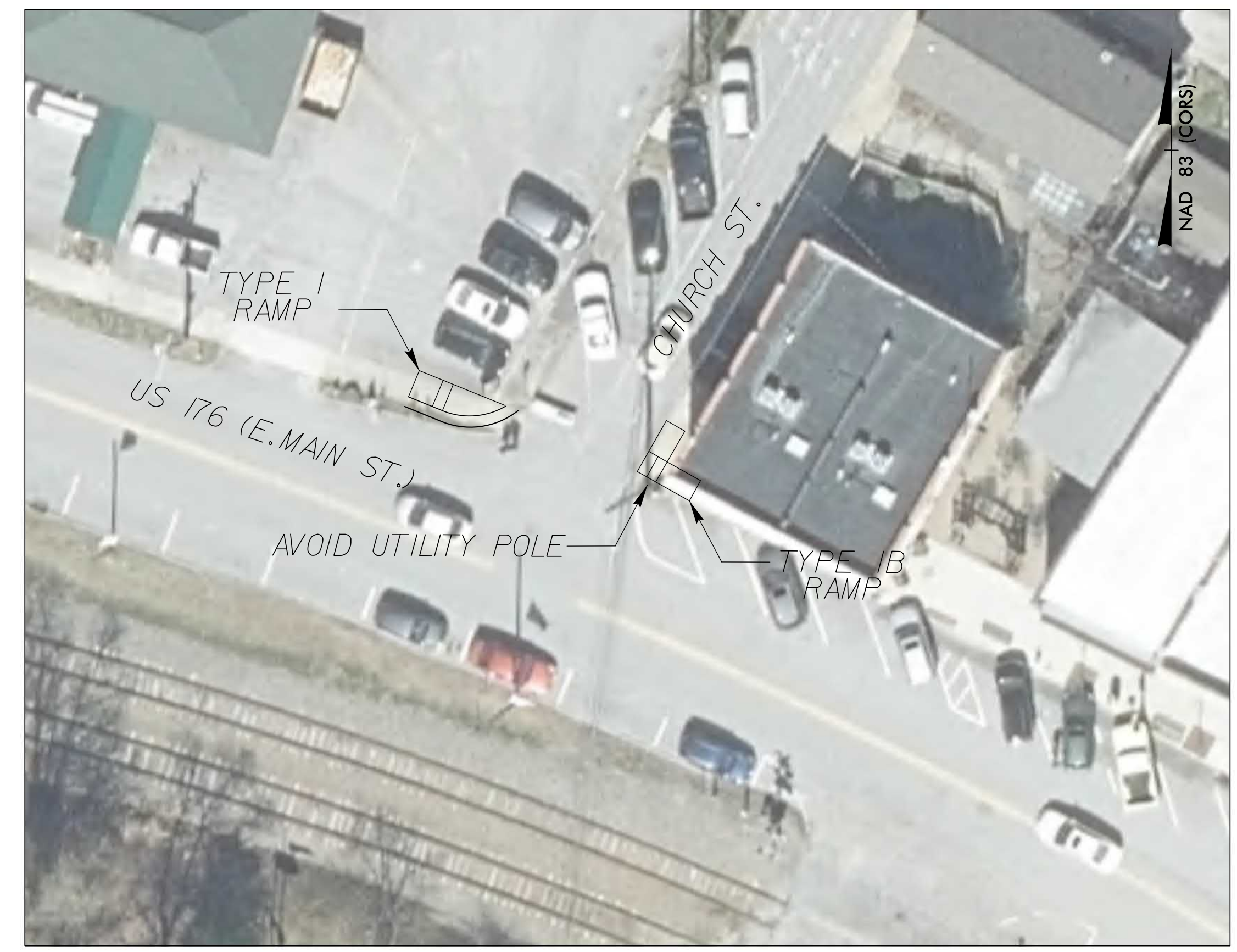
PLAN SHEETS FOR POLK COUNTY

wsp 1001 MOREHEAD SQUARE DRIVE
 SUITE 610
 CHARLOTTE, NC 28203
 NC LIC. NO. F-0165

**DOCUMENT NOT CONSIDERED FINAL
 UNLESS ALL SIGNATURES COMPLETED**

PROJECT REFERENCE NO. R-5794E	SHEET NO. 5
RW SHEET NO.	
ROADWAY DESIGN ENGINEER	

SITE 3 - US 176 (MAIN ST.) AND CHURCH ST.



SITE 4 - US 176 (MAIN ST.) AND CULLIPHER ST.



SITE 5 - US 176 (MAIN ST.) AND SALUDA SCHOOL PARKING



SEE SHEETS 2C-1 & 2C-2 FOR CURB RAMP DETAILS